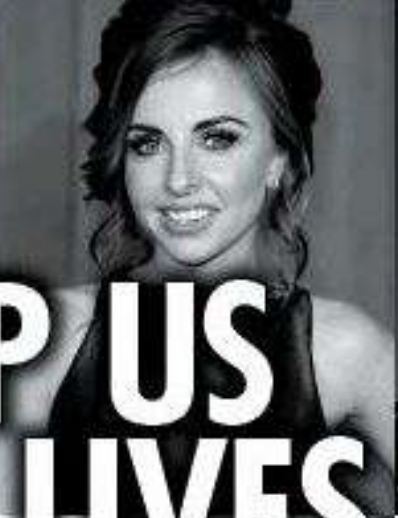
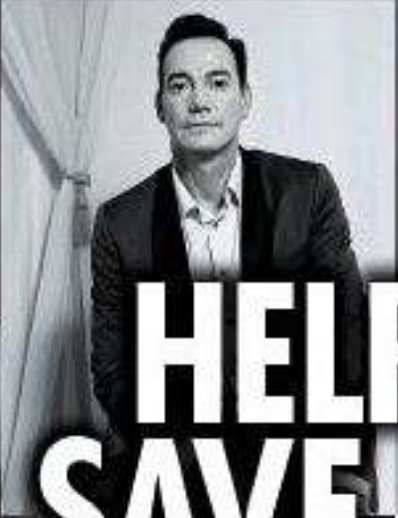


CLOSE! CLEAR OUT  
TOP PRICE!

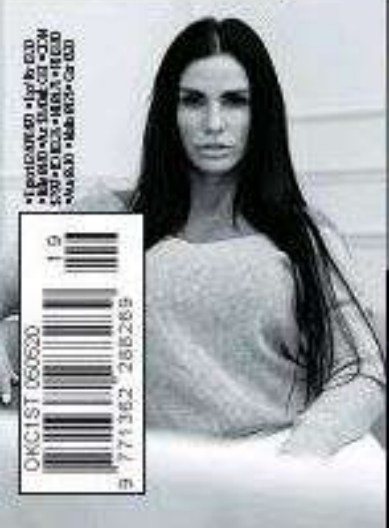
# OK!

ISSUE 1236 • 12 MAY 2020 • £2.40 WEEKLY



# HELP US SAVE LIVES

JOIN THE  
FAMOUS FACES  
BACKING OUR  
CAMPAIGN  
AGAINST  
DOMESTIC  
ABUSE



OKG1ST 050620  
19  
771362 288289

# THE BEST ECO HOTELS

WE LOOK AT SOME OF THE FINEST LOCATIONS FOR LIVING THE GREEN DREAM

**W**ith climate change an issue that affects us all, some destinations have really upped their game by offering properties with strong green credentials, sustainable practices and eco-tourism activities, which still provide a sense of luxury. Here are a few of our favourites...



## NOKA CAMP, SOUTH AFRICA

Guests that stay at Lepogo Lodges in Noka Camp, a three-hour drive from Johannesburg, can help raise cash for conservation projects during their stay.

The safari camp, located in the Lapalala Wilderness, has taken an inspired approach to raising funds. To offset their guests' carbon footprint, the not-for-profit hotel group calculates the estimated carbon emissions from each guest's journey and converts it into a monetary value. Visitors then choose to donate this cash to one of the camp's three conservation projects.

[LEPOGOLODGES.COM](http://LEPOGOLODGES.COM)



## LAPA RIOS RAINFOREST LODGE, COSTA RICA

Costa Rica is top of many people's wish lists with its spectacular scenery and outdoor pursuits – kayaking among mangroves and swimming in waterfall pools or volcanic hot springs.

The bonus of staying at Lapa Rios, a member of National Geographic Unique Lodges, is you get to enjoy both a rainforest and beach experience as it sits at the end of a jungle-clad peninsula.

The property, which overlooks the Pacific Ocean, offers 17 rustic-chic bungalows built with local bamboo and hardwood.

[LAPARIOS.COM](http://LAPARIOS.COM)



## NIMMO BAY, CANADA

One of the world's first eco lodges, Nimmo Bay is surrounded by the dense foliage of the Great Bear Rainforest, home to bears and bobcats. The resort, which can only be accessed by seaplane or helicopter, is run off grid with most of its drinking water and power provided by its hydropower system and wheel turbine.

[NIMMOBAY.COM](http://NIMMOBAY.COM)



## SHINTA MANI WILD, CAMBODIA

This must be the most adrenaline-pumping way ever to reach a hotel, as guests whizz along a 1,050-metre zip line across the rainforest canopy and the bubbling rapids of the Tmog Rung River before arriving at the Landing Zone Bar for a drink.

Located in the Southern Cardamom National Park, the Bensley Collection's Shinta Mani Wild is a cluster of 15 luxurious tents. Guests can join an anti-poaching patrol, forage for wild edible plants or take a pontoon boat river excursion. **OK!**

[BENSLEYCOLLECTION.COM](http://BENSLEYCOLLECTION.COM)

